

NUTP81 Series

24V Continuous High Output LED Tape Light

Source: 6.5W/ft. LED
450lm/ft.

Type

Project

Catalog No.

Notes

PRODUCT DESCRIPTION

High Output Continuous LED Tape is the perfect solution when you need more light than Standard LED Tape. Producing 450 lumens per foot, the High Output Continuous LED Tape uses the same connectors and accessories as the Continuous Hy-Brite LED Tape. The low profile tape is the ideal for coves, architectural details, under and in cabinets, toe kicks, and back lighting.

FEATURES

- 16' or 100' Spool - Economical and Efficient
- 24V DC system
- 450 lumens per foot
- Single color illumination in three color temperatures (2700K, 3000K or 4200K)
- Field cuttable every 4" or 6 LEDs
- Easy to install; pre-applied 3M™ tape or acrylic mounting clips (included)

INCLUDED WITH EVERY 100' ROLL

(1) 100' Tape Light Roll, (50) Acrylic Mounting Clips with screws and (1) 12" Power Line Interconnector

INCLUDED WITH EVERY 16' ROLL

(1) 16' Tape Light Roll, (10) Acrylic Mounting Clips with screws and (1) 12" Power Line Interconnector

SPECIFICATION

Construction: The Continuous LED Tape can be cut every 6 LEDs at marked 4" intervals, cutting does not effect circuit. Easy flip style snap-on connectors connect to the cut ends.

Mounting: Each Tape Light includes pre-applied 3M™ adhesive tape for simple installation. Optional channels and clear acrylic clips are available.

LIMITATIONS

- Not rated or warranted for enclosed applications
- Tape light and most accessories are not rated for in-wall installation (NATL-W16-2 is rated for in-wall installations)
- Do not install in where LED chips are exposed to direct sunlight, as damage to the phosphor will occur

ELECTRICAL

Input Voltage: 24V

Lumens / Wattage: 450lm / 6.5W per foot

Color Temperature: 2700K, 3000K or 4200K

Color Rendering Index: 90+ CRI

Operating Temperature: -25°C to 45°C

Dimming: Dimmable with Dimmable LED Driver

Maximum Run Length: 16'

LABELS AND LISTINGS

- cULus Listed for Damp Locations
- 3-Year Limited Warranty



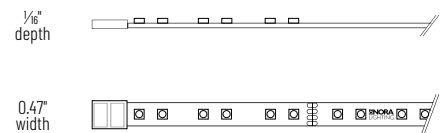
PRODUCT IMAGES & DIMENSIONS



NUTP81-W16LED
16' Roll



NUTP81-W100LED
100' Roll



24V Continuous High Output LED Tape Light

Length	CCT / CRI
NUTP81-W20LED = 16' Roll	927 = 2700K / 90 CRI
NUTP81-W100LED = 100' Roll	930 = 3000K / 90 CRI
NUTP81-WFTLED = Custom Cut (Qty. Ordered = Length in Feet)	942 = 4200K / 90 CRI

Example: **NUTP81-W100LED930** = 100' 24V Continuous High Output LED Tape Light, 3000K / 90 CRI

NUTP81 Series

24V Continuous High Output LED Tape Light Accessories

Type

Project

Catalog No.

Notes



Flip Type DC Plug Connector

NATLCFC-609/3A	3"
NATLCFC-609/12A	12"
NATLCFC-609/48A	48"
NATLCFC-609/96A	96"

Power cord connects NUTP81 tape light to a driver.



Flip Type Splice Connector

NATLCFC-608/3A	3"
NATLCFC-608/12A	12"
NATLCFC-608/48A	48"
NATLCFC-608/96A	96"

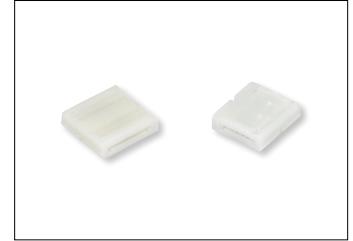
Power cord connects NUTP81 tape light to a 24V input source (No DC plug)



Flip Type Interconnector Cable

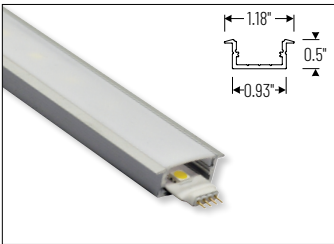
NATLCFC-603A	3"
NATLCFC-606A	6"
NATLCFC-612A	12"
NATLCFC-624A	24"
NATLCFC-648A	48"
NATLCFC-672A	72"
NATLCFC-696A	96"

Allows easy linking of two pieces of NUTP81 tape light. Cables are flexible and can be moved in any direction.



Flip Type Link Connector

NATLCFC-600A
Allows connecting two pieces of NUTP81 tape light.



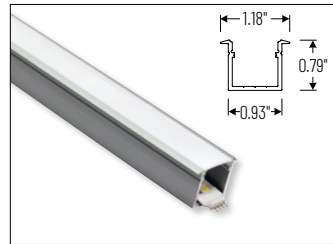
4' Shallow Recessed Channel

NATL-C23A Aluminum Finish
Used to mount tape light recessed in a surface. 4' length and field cuttable. Diffused lens and end caps are included.



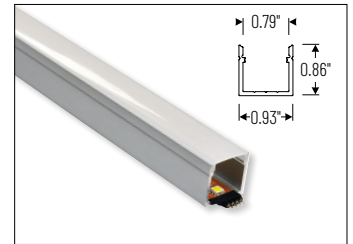
4' Shallow Channel

NATL-C24A Aluminum Finish
NATL-C24B Black Finish
NATL-C24W White Finish
Used to mount tape light to flat surface. 4' length and field cuttable. Diffused lens and end caps are included.



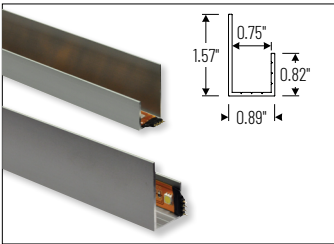
4' Deep Recessed Channel

NATL-C25A Aluminum Finish
Used to mount tape light recessed in a surface. 4' length and field cuttable. Diffused lens and end caps are included.



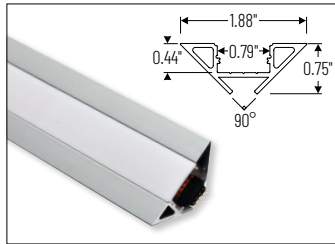
4' Deep Channel

NATL-C26A Aluminum Finish
NATL-C26W White Finish
Used to mount tape light to flat surface. 4' length and field cuttable. Diffused lens and end caps are included.



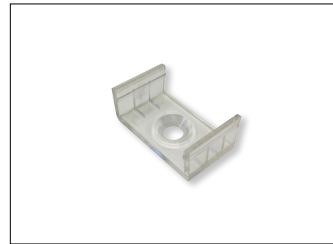
4' J-Style Channel

NATL-C27A Aluminum Finish
Used to mount tape light to flat surface. 4' length and field cuttable.



4' Corner Channel

NATL-C28A Aluminum Finish
NATL-C28B Black Finish
NATL-C28W White Finish
Used to mount tape light to a corner. 4' length and field cuttable. Diffused lens and end caps are included.



Mounting Clips for Channels

NATL-CMC Pack of 15
Used to mount compatible channel to surface. Pack includes 15 mounting clips.
Compatible Channels:
NATL-C23, NATL-C24, NATL-24, NATL-C27



Mounting Clips & 4' Channel

NATHR-680 4' Aluminum Channel
NATHR-685 Pack of 15
Used to mount tape light to flat surface.

NUTP81 Series

24V Continuous High Output LED Tape Light Drivers & Accessories

Type

Project

Catalog No.

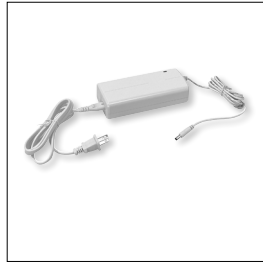
Notes



Direct Plug-In LED Driver

NATL-524W 24V 24W
NATL-545W 24V 45W

Input Voltage: 120V
Cable Length: 6'



Direct Plug-In LED Driver

NATL-596W 24V 96W

Input Voltage: 120V
Input Wire: 44" Cord and Plug
Output Wire: 58" Power line connector



Class II Hardwire LED Driver

NATL-5100HW 24V 81.6W

Input Voltage: 120-240V
Dimming: Non-Dimmable
Includes: 10' Power Line Connector



Class II Universal Dimming Driver

NPSU-60W/24 60W
NPSU-96W/24 96W
NPSU-3X96W/24 3x 96W

Input Voltage: 110-277V
Dimming: Triac, ELV, MLV, 0-10V, PWM
Note: Power Line Connector(s) not included



Class II Hardwire LED Driver
ELV Dimming

NATLED-5040HW 24V 40W
NATLED-5075HW 24V 75W

Input Voltage: 120V
Dimming: ELV
Includes: 10' Power Line Connector



Class II Hardwire LED Driver
MLV Dimming

NMT-48/24C2D1 48W

Input Voltage: 120V
Dimming: Magnetic Low Voltage
Includes: 10' Power Line Connector



Class II Hardwire LED Driver
with Breakers, MLV Dimming

NMT-303/24C2D1 120V input
NMT-303/24C2D2 277V input

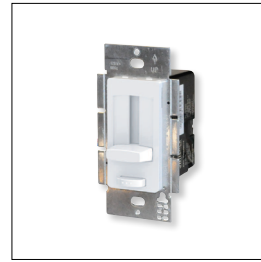
Input Voltage: 120V or 277V
Dimming: Magnetic Low Voltage
Breakers: (3) 100W
Note: Power Line Connector(s) not included



Class II Hardwire LED Driver
with Regulator, MLV Dimming

NMTD-60/24D 24V 60W
NMTD-96/24D 24V 96W

Input Voltage: 120-277V
Dimming: Magnetic Low Voltage
Regulator: Integral regulator for constant current and voltage
Includes: 10' Power Line Connector



NEXUS® All-in-One LED Driver and
Dimmer

NATL-SWEX60/24A 24V 60W
NATL-SWEX100/24A 24V 100W

Input Voltage: 120V
Dimming: Integral Dimmer
Description: Eliminates the driver and allows 120V input and 24V output from a single gang box. 100-5% dimming and on/off switch.



Power Line Connector

NATL-10 10' Power Line
NATL-30 30' Power Line

For use with Class II drivers. Carries output from driver, requires power line interconnectors.

NATL-302W 5" Splitter

Splits power line connector into two separate leads, requires power line cable.



Touch Dimmer with Memory

NATL-518W

72W max., no power fail memory, touch on/off and hold to dim.



Low Voltage Splice Box

NATL-415W

Use to join low voltage lead to power line connector.



Terminal Block

NATL-407 4-Way
2-3/8"L x 1-1/8"W x 7/16"D

NATL-408 8-Way
4"L x 1-1/8"W x 7/16"D



Wire Clip, Plastic - 10pk

NATL-404W J-Clip
NATL-405W Over the Wire
NATL-406W Square Clip



2' Wire Raceway

NATL-422B Black
NATL-422W White

Field-cuttable plastic. Includes wire channel with double faced tape and cover.