

NTM-615 / NTP-614

6" Sloped Baffle Trim

Type _____

Project _____

Catalog No. _____

Notes _____

FEATURES

Trim: Precision spun 0.040 metal or phenolic baffle with deep grooves to reduce aperture glare, and white flange. Non-reflective painted finishes.

Mounting: Trim includes two coil springs that clip and securely hold the trim into the housing when installed. Replacement coil springs are available (NRA-22). Accommodates slope ceilings with a 2/12 - 5/12 pitch to provide straight downlighting.

COMPATIBLE LAMP / HOUSINGS

Sloped Line Voltage:

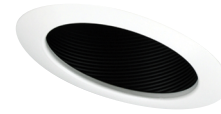
- 75W BR30/PAR30 Maximum (NHIC-9260AT; NHRIC-9260AT)
- 100W BR40/PAR38 Maximum (NHIC-926DW0AT)

LABELS AND LISTINGS

cULus Listed for Damp Location when used with compatible housing.



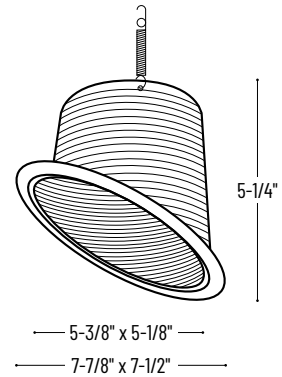
PRODUCT IMAGES AND DIMENSIONS



NTM-615B



NTM-615W



6" Sloped Baffle Trim

Catalog No. _____

- NTM-615B:** Black Metal Baffle with White Flange
- NTM-615W:** White Metal Baffle with White Flange
- NTP-614B:** Black Phenolic Baffle with White Flange
- NTP-614BB:** Black Phenolic Baffle with Black Flange
- NTP-614W:** White Phenolic Baffle with White Flange

Compatible Housings

Sloped Line Voltage

Catalog No. _____

- NHIC-9260AT** = IC Air-Tight New Construction Sloped / 75W max.
- NHRIC-9260AT** = IC Air-Tight Remodel Sloped Sloped / 75W max.
- NHIC-926DW0AT** = IC Air-Tight Double Wall Sloped / 100W max.

Example: **NTM-615B** = 6" Sloped Black Metal Baffle with White Flange