

NHIOICD-4PS

4" Iolite PLUS IC Air-Tight High Lumen New Construction Housing for Square PLUS Trimless Only

Source: 20W to 28W LED
1500lm to 2500lm

Type	
Project	
Catalog No.	
Notes	

PRODUCT DESCRIPTION

New construction housing for use with Square PLUS trimless only. Rated for insulated ceilings and can be in direct contact with insulation. Air-tight construction provides energy savings by reducing the flow of air through the ceiling. Patented design allows for easy, tool-less removal of the driver.

SPECIFICATION

Housing: 0.040" Aluminum housing can be installed in ceilings up to 1/2" thick.

Patented Driver Assembly: Allows driver to slide out of housing without tools from the room side. Housing includes a removable top cover for driver maintenance above the ceiling.

Air Flow Restriction: Meets requirements of Air-Tight (AT) <2CFM (cubic feet per minute) in accordance with ASTM-283 Air-Tight requirements.

Clearance: "IC" Insulated ceiling housings are direct contact rated. Not to be used in direct contact with spray foam insulation.

Bar Hangers: Two 13-3/4" to 24-1/2" adjustable bar hangers with captive nails are included on housing. Bar hanger brackets are parallel to junction box, but can be repositioned 90° perpendicular to junction box if desired. "L"-shaped bar hanger foot to align to bottom of construction joist. A T-bar notch allows for easy installation in a suspended ceiling.

Junction Box: Pre-wired 25 cubic inch 0.064" thick galvanized steel, with seven 1/2" knockouts, four Romex® pryouts, and snap on covers. All leads are #18AWG wire, the ground wire is connected to the bottom, and quick connectors are supplied on all leads. Maximum of 8 no. 12 AWG through branch circuit conductors suitable for at least 90°C permitted in junction box. Junction box is accessible from the room side through housing opening.

ELECTRICAL

	15LE4	15LUPE0	20LE4	25LE4
Input Voltage	120/277V			
Input Power	20W	20W	24W	28W
Power Factor	≥0.90			
Dimming	Triac / ELV / 0-10V	Lutron EcoSystem	Triac / ELV / 0-10V	
Operating Temp.	40°C max.	25°C max.	30°C max.	25°C max.
Compatible Trimless	NIO-4PSTLA / NIO-4PSTLNDC			NIO-4PSTLNDC

COMPATIBLE TRIMLESS

CATALOG NO.	DESCRIPTION
NIO-4PSTLA	4" PLUS Square Trimless Adjustable
NIO-4PSTLNDC	4" PLUS Square Trimless Downlight

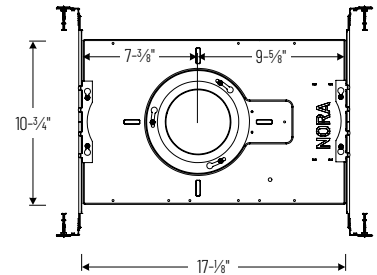
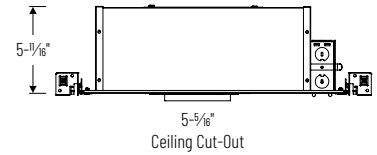
Emergency: Housing can be specified with connections for emergency battery installation. Requires access above ceiling. Must specify battery with remote test switch separately ([NEPK-07LEDUNV](#)).
Note: Emergency is not compatible with Chicago plenum.

LABELS AND LISTINGS

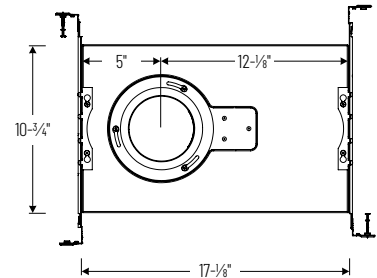
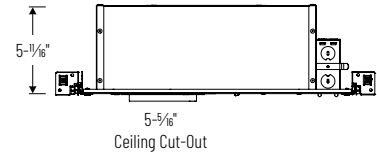
- cULus Listed for Damp Locations
- ENERGY STAR certified
- [5-Year Limited Warranty](#)
- RoHS Compliant
- FCC compliant
- Patent #D824567S
- Meets or exceeds ASTM-283 Air-Tight requirements



PRODUCT IMAGES AND DIMENSIONS



NHIOICD-4PS15 / NHIOICDCP-4PS15 NHIOICD-4PS20 / NHIOICDCP-4PS20



NHIOICD-4PS25 / NHIOICDCP-4PS25

4" Iolite PLUS Trimless New Construction Housing - Compatible with NIO-4PS square trimless

Housing Type / Lumens / Wattage	Driver / Dimming	Optional Emergency
NHIOICD-4PS15 = IC Air-Tight / 1500lm / 20W NHIOICDCP-4PS15 = Chicago Plenum / 1500lm / 20W	LE4 = 120/277V input; Triac / ELV / 0-10V dimming LUPE0 = 120/277V input; Lutron Hi-lume Premier 0.1% EcoSystem with Soft-On, Fade-to-Black (consult factory)	/PEM = Pre-Wired for Remote Emergency (not compatible with NHIOICDCP)
NHIOICD-4PS20 = IC Air-Tight / 2000lm / 24W NHIOICDCP-4PS20 = Chicago Plenum / 2000lm / 24W NHIOICD-4PS25 = IC Air-Tight / 2500lm / 28W NHIOICDCP-4PS25 = Chicago Plenum / 2500lm / 28W	LE4 = 120/277V input; Triac / ELV / 0-10V dimming	/PEM = Pre-Wired for Remote Emergency (not compatible with NHIOICDCP)

Iolite PLUS Trimless Mud Ring

Description
NIO-TLMR-4PS = PLUS Square Trimless Mud Ring
Optional Emergency Battery
Description
NEPK-07LEDUNV = Remote Emergency Battery w/Test Switch

Example: **NHIOICD-4PS20LE4** = 4" Iolite PLUS Trimless New Construction Housing, 2000lm / 24W, 120-277V input; Triac / ELV / 0-10V dimming