

### PRODUCT DESCRIPTION

LED flush mount disk lights are designed for installation over junction boxes from below the ceiling. Surface mount downlights are available in Dedicated 3000K or Five Selectable CCTs. Low profile luminaires are perfect solution for closets, storage areas, attics and basements.

### FEATURES

- AC LED (No Driver)
- Dedicated 3000K or Five Selectable CCT (2700K/3000K/3500K/4000K/5000K)
- Quick installation and cost savings
- Mounts on standard junction boxes
- cETLus Listed for Wet Locations
- 5-year limited warranty

### SPECIFICATION

**Construction:** One piece aluminum die formed housing and trim. Aluminum body dissipates heat and extends life.

**Mounting:** Surface mount luminaire is compatible with 3" or 4" junction boxes and 1/2" deep pancake boxes for ceiling or wall mount applications.

**Ratings:** IC rated when used with a 4" electrical junction box rated for direct contact with insulation. Fire rated when used with a fire rated junction box.

### ELECTRICAL

**Voltage:** 120VAC

**Lumens / Wattage:** 1200lm / 16W

**Color Temperature:** Dedicated (3000K) or Five Selectable CCTs (2700K / 3000K / 3500K / 4000K / 5000K: Preset to 3000K)

**Color Rendering Index:** 90+ CRI

**Beam Spread:** 112° Wide Flood

**Operating Temperature:** 0°C to 35°C ambient temperature

**Lifetime:** 50,000 hours @ L70

**Dimming:** Triac or ELV

[Click Here](#) or check complete dimmer list at [www.NoraLighting.com](http://www.NoraLighting.com) in the "Compatibility" page under "Resources" tab

### LABELS AND LISTINGS

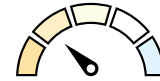
- cETLus Listed for Wet locations
- Certified to the high efficacy requirements of California Title 24 JA8-2022
- [5-Year Limited Warranty](#)
- FCC Compliant



### Performance Data

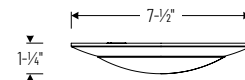
Part Number	Dedicated	Selectable	CCT
NCS-D-R6	-	1134lm	2700K
NCS-D-R6	1213lm	1189lm	3000K
NCS-D-R6	-	1270lm	3500K
NCS-D-R6	-	1259lm	4000K
NCS-D-R6	-	1181lm	5000K

### PRODUCT IMAGES AND DIMENSIONS

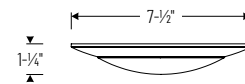


#### Selectable CCT

Five position sliding switch  
27K / 30K / 35K / 40K / 50K



**NCS-D-R6TWPW**  
6" Disk Light with Selectable CCT



**NCS-D-R630MPW**  
6" Disk Light with Dedicated CCT



**SOLD IN PACKS OF 12**

CATALOG NUMBER	UPC	CASE QTY.	DESCRIPTION	COLOR TEMPERATURE	PALLET QTY.
NCS-D-R630MPW	732180816897	12 PCS.	6" LED Flush Mount Disk Light with Dedicated 3000K CCT	3000K	104
NCS-D-R6TWPW	732180816880	12 PCS.	6" LED Flush Mount Disk Light with Selectable CCT	Selectable CCT	104

Example: **NCS-D-R6TWPW** = 6" LED Flush Mount Disk Light, Selectable CCT, Matte Powder White Finish (Bulk Pack: 12 Pieces)

# PHOTOMETRICS

## 6" LED Flush Mount Disk Light with Selectable CCT Contractor Series

Type

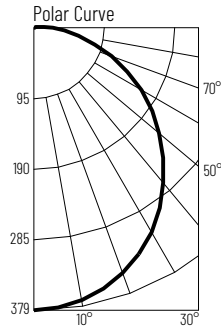
Project

Catalog No.

Notes

### Test Information

Test Number: NTR2331R1  
 Part Number: NCSD-R6TWMPW  
 Beam Spread: 112° Wide Flood  
 Lumens: 1134lm  
 Wattage: 14.96W  
 Efficacy: 76lpw  
 CCT / CRI: 2700K / 90 CRI  
 Spacing Criteria (0°-180°): 1.24  
 Spacing Criteria (90°-270°): 1.24



### Illuminance at a Distance

Distance from Luminaire	FC at Nadir	Beam Diameter
4'	23.7fc	11'-10"
6'	10.5fc	17'-8"
8'	5.9fc	23'-7"
10'	3.8fc	29'-6"
12'	2.6fc	35'-5"

### Zonal Lumen Summary

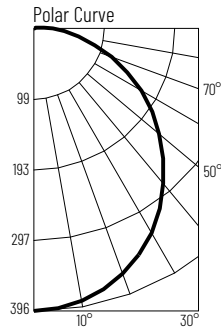
Zone	Lumens	% Luminaire
0-30	293	25.8
0-40	478	42.1
0-60	842	74.2
0-90	1114	98.2
90-180	20	1.8
0-180	1134	100

### Candela Table

Vertical Angles	Candela
0	379
5	377
15	363
25	335
35	295
45	246

### Test Information

Test Number: NTR2332R1  
 Part Number: NCSC-R6TWMPW  
 Beam Spread: 112° Wide Flood  
 Lumens: 1189lm  
 Wattage: 15.06W  
 Efficacy: 79lpw  
 CCT / CRI: 3000K / 90 CRI  
 Spacing Criteria (0°-180°): 1.26  
 Spacing Criteria (90°-270°): 1.26



### Illuminance at a Distance

Distance from Luminaire	FC at Nadir	Beam Diameter
4'	24.8fc	11'-11"
6'	11fc	17'-10"
8'	6.2fc	23'-10"
10'	4fc	29'-8"
12'	2.8fc	35'-8"

### Zonal Lumen Summary

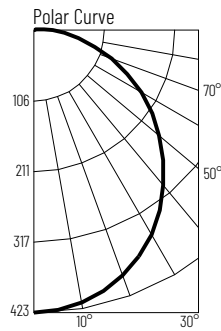
Zone	Lumens	% Luminaire
0-30	306	25.7
0-40	500	42
0-60	881	74.1
0-90	1168	98.2
90-180	0	0
0-180	1189	100

### Candela Table

Vertical Angles	Candela
0	396
5	395
15	380
25	352
35	310
45	259

### Test Information

Test Number: NTR2333R1  
 Part Number: NCSC-R6TWMPW  
 Beam Spread: 112° Wide Flood  
 Lumens: 1270lm  
 Wattage: 15.42W  
 Efficacy: 82lpw  
 CCT / CRI: 3500K / 90 CRI  
 Spacing Criteria (0°-180°): 1.26  
 Spacing Criteria (90°-270°): 1.26



### Illuminance at a Distance

Distance from Luminaire	FC at Nadir	Beam Diameter
4'	26.4fc	11'-10"
6'	11.7fc	17'-10"
8'	6.6fc	23'-8"
10'	4.2fc	29'-7"
12'	2.9fc	35'-6"

### Zonal Lumen Summary

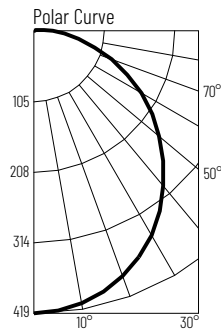
Zone	Lumens	% Luminaire
0-30	327	25.7
0-40	533	42
0-60	941	74.1
0-90	1247	98.2
90-180	23	1.8
0-180	1270	100

### Candela Table

Vertical Angles	Candela
0	423
5	421
15	405
25	375
35	330
45	276

### Test Information

Test Number: NTR2334R1  
 Part Number: NCSC-R6TWMPW  
 Beam Spread: 112° Wide Flood  
 Lumens: 1259lm  
 Wattage: 15.25W  
 Efficacy: 83lpw  
 CCT / CRI: 4000K / 90 CRI  
 Spacing Criteria (0°-180°): 1.26  
 Spacing Criteria (90°-270°): 1.26



### Illuminance at a Distance

Distance from Luminaire	FC at Nadir	Beam Diameter
4'	26.2fc	11'-10"
6'	11.6fc	17'-8"
8'	6.5fc	23'-7"
10'	4.2fc	29'-5"
12'	2.9fc	35'-4"

### Zonal Lumen Summary

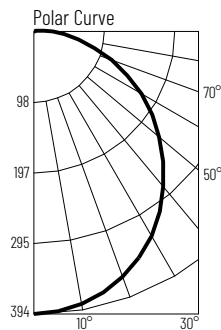
Zone	Lumens	% Luminaire
0-30	324	25.7
0-40	528	42
0-60	932	74.1
0-90	1236	98.2
90-180	23	1.8
0-180	1259	100

### Candela Table

Vertical Angles	Candela
0	419
5	416
15	400
25	371
35	327
45	274

### Test Information

Test Number: NTR2335R1  
 Part Number: NCSC-R6TWMPW  
 Beam Spread: 112° Wide Flood  
 Lumens: 1181lm  
 Wattage: 15.02W  
 Efficacy: 79lpw  
 CCT / CRI: 5000K / 90 CRI  
 Spacing Criteria (0°-180°): 1.26  
 Spacing Criteria (90°-270°): 1.26



### Illuminance at a Distance

Distance from Luminaire	FC at Nadir	Beam Diameter
4'	24.6fc	11'-8"
6'	10.9fc	17'-7"
8'	6.1fc	23'-6"
10'	3.9fc	29'-4"
12'	2.7fc	35'-2"

### Zonal Lumen Summary

Zone	Lumens	% Luminaire
0-30	304	25.7
0-40	496	42
0-60	875	74.1
0-90	1160	98.2
90-180	21	1.8
0-180	1181	100

### Candela Table

Vertical Angles	Candela
0	393
5	391
15	375
25	348
35	306
45	256

# PHOTOMETRICS

## 6" LED Flush Mount Disk Light with Dedicated 3000K Contractor Series

Type \_\_\_\_\_

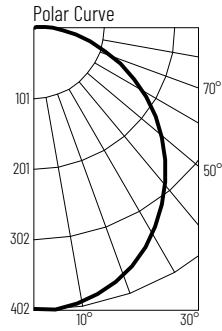
Project \_\_\_\_\_

Catalog No. \_\_\_\_\_

Notes \_\_\_\_\_

### Test Information

Test Number: NTR2336R1  
 Part Number: NCS-D-R630MPW  
 Beam Spread: 112° Wide Flood  
 Lumens: 1213lm  
 Wattage: 15.58W  
 Efficacy: 78lpw  
 CCT / CRI: 3000K / 90 CRI  
 Spacing Criteria (0°-180°): 1.26  
 Spacing Criteria (90°-270°): 1.26



### Illuminance at a Distance

Distance from Luminaire	FC at Nadir	Beam Diameter
4'	25fc	11'-11"
6'	11.1fc	17'-11"
8'	6.3fc	23'-10"
10'	4fc	29'-10"
12'	2.8fc	35'-8"

### Zonal Lumen Summary

Zone	Lumens	% Luminaire
0-30	256	21.1
0-40	426	35.1
0-60	870	71.7
0-90	1191	98.1
90-180	23	1.9
0-180	1213	100

### Candela Table

Vertical Angles	Candela
0	400
5	398
15	383
25	355
35	314
45	263